

# State of Wyoming Corner Record

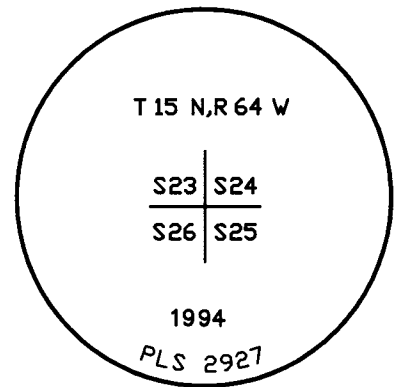
(In compliance with the **CORNER PERPETUATION AND FILING ACT**, Wyoming Statutes, 1977 Section 36-11-101, et. seq., and the Rules and Regulations of the Board of Professional Engineers and Professional Land Surveyors)

Reverse side of this form may be used if more space is needed.

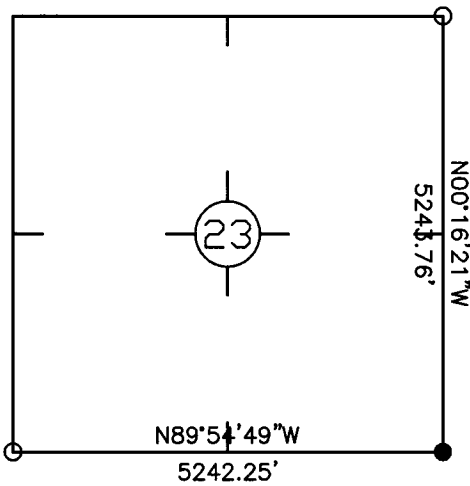
Record of original survey and citation of source of historical information (if corner is lost or obliterated). Description of corner monumentation evidence found and/or monument and accessories established to perpetuate the location of this corner. Sketch of relative location of monument, accessories, and reference points with course and distance to adjacent corner(s) (if determined in this survey). Method and rationale for reestablishment of lost or obliterated corner.

**FOUND:** A 3/4" nominal rebar and aluminum cap set 5" above ground for corner stamped as shown. A fence corner running West and South is located 2" South of corner.

**SET:** Nothing.



**Monument location**



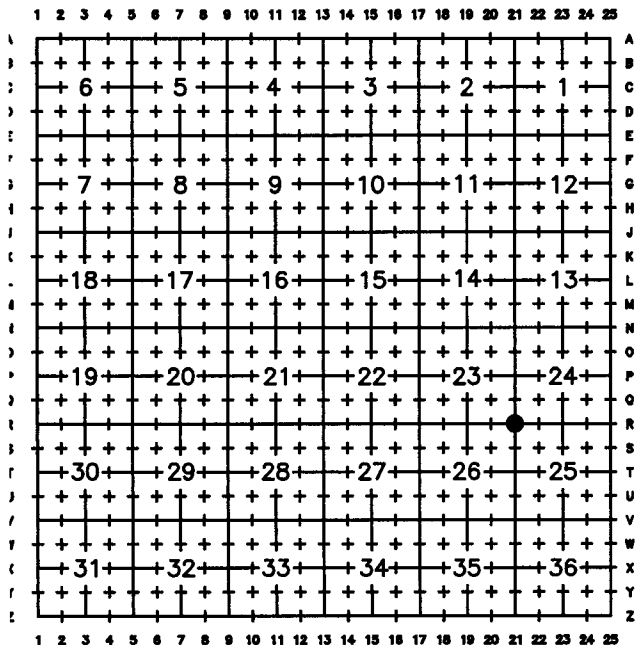
**Monument Inscription**

  
 RECORDED 8/16/2010 AT 1:42 PM REC# 550755 JK# 2178 PG# 470  
 DEBRA K. LATHROP, CLERK OF LARAMIE COUNTY, WY PAGE 1 OF 1

**Date of Field Work:** 05/19/10

**Office Reference:** 8352-10S

## Cross Index Plat

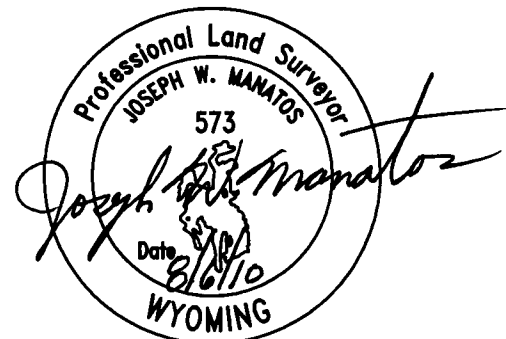


**Firm/Agency, Address**

JFC Engineers & Surveyors  
 1515 Ninth Street, Suite A  
 ROCK SPRINGS, WYOMING 82901  
 Telephone Number: (307)362-7519

This corner record was prepared by me or under my direction and supervision.

**SEAL & SIGNATURE**



**Corner Name:** SOUTHEAST CORNER

**SECTION:** 23 T 15 N, R 64 W, 6TH P.M.  
**County:** LARAMIE WYOMING

**Cross-Index No.:** R-21